



e 602-II

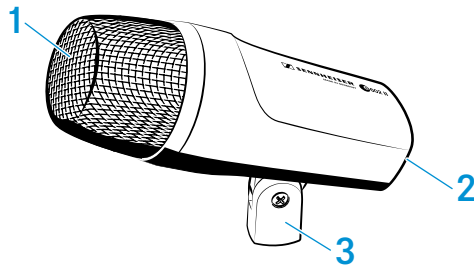
Instruction manual



Delivery includes

- e 602-II
- pouch
- quick guide
- safety guide

Product overview



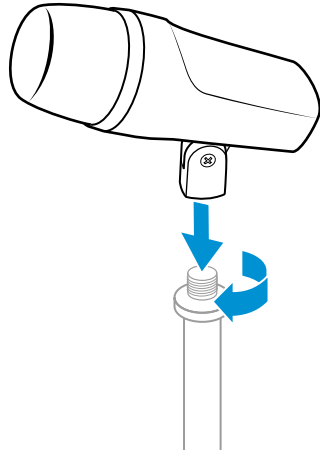
1. sound inlet basket
2. XLR-3 connector
3. integral stand mount



Installation

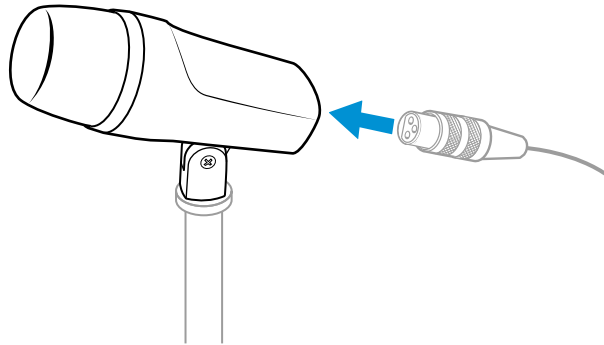
Attaching the microphone

- ▷ Screw the microphone's built-in mount onto a sufficiently stable microphone stand.



Connecting the microphone

- ▷ Connect the XLR-3 socket of the microphone cable (optional accessories) to the XLR-3 socket of the microphone.





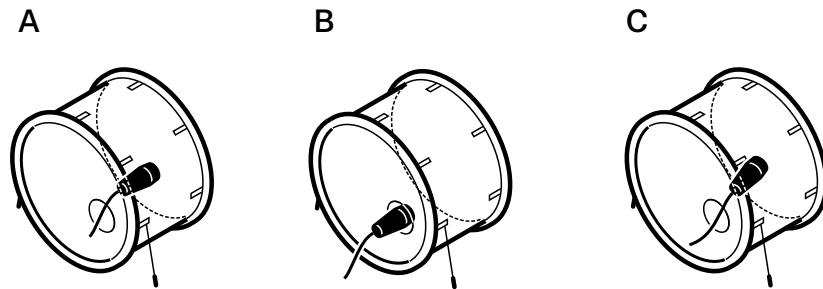
Operation

Positioning the microphone on a kick drum

▷ It is vital to observe the following notes:

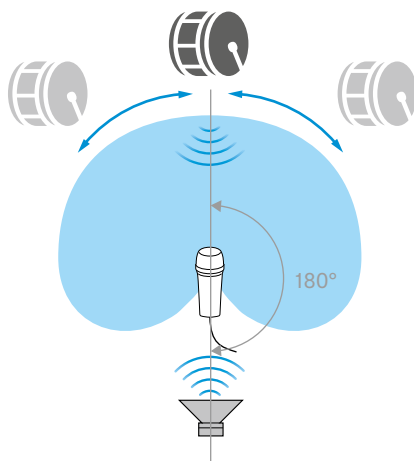
Position	Resulting sound	Commentary
A	much attack little resonance dry	Position the microphone at a distance of a few centimeters from the batter head.
B	less attack much resonance smooth and voluminous	Position the microphone at the level of the resonant head.
C	less Attack	Position the microphone in the middle between the batter head and the resonant head.

i For less attack in all three positions, turn the microphone away from where the beater strikes.



Positioning the monitor loudspeakers

▷ To prevent feedback and crosstalk, position your monitor loudspeakers in the angle area of the highest cancellation of the microphone (approx. 180°).





Cleaning and maintaining the e 602-II

CAUTION

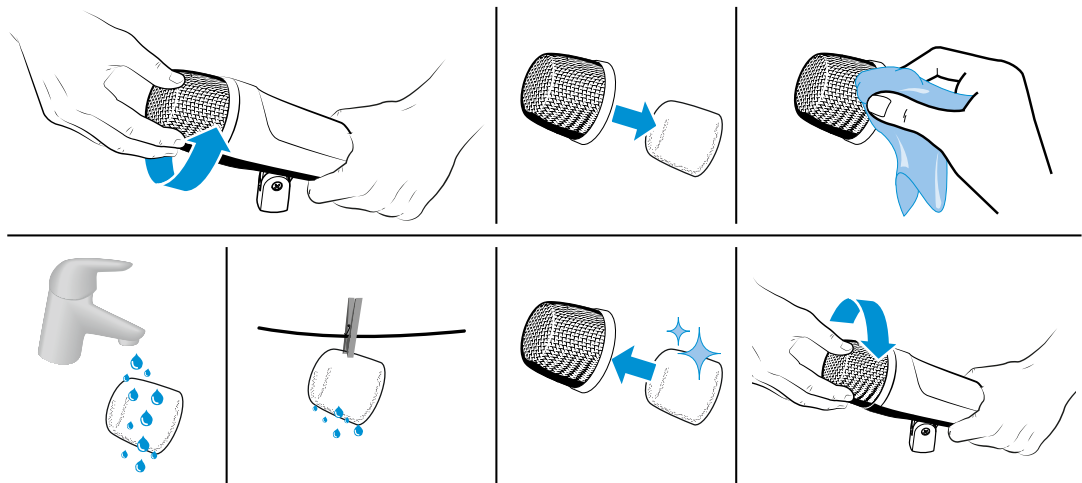
LIQUIDS CAN DAMAGE THE ELECTRONICS OF THE PRODUCT!

Liquids entering the housing of the product can cause a short-circuit and damage the electronics.

- ▷ Keep all liquids away from the product.
 - ▷ Do not use any solvents or cleansing agents.
-
- ▷ Disconnect the products from the power supply system and remove rechargeable batteries and batteries before you begin cleaning.
 - ▷ Clean all products only with a soft, dry cloth.

Cleaning the sound inlet basket of the microphone module

- ▷ Unscrew the sound inlet basket.
- ▷ Remove the foam insert from the sound inlet basket.
- ▷ Use a slightly damp cloth to clean the sound inlet basket from the inside and outside.
- ▷ If necessary, clean the foam insert with a mild detergent or replace the foam insert.
- ▷ Dry the foam insert.
- ▷ Reinsert the foam insert.
- ▷ Replace the sound inlet basket on the microphone head and screw it tight.

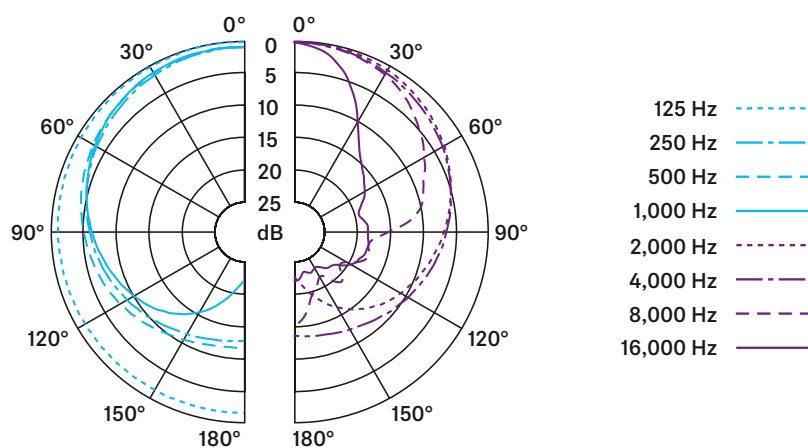




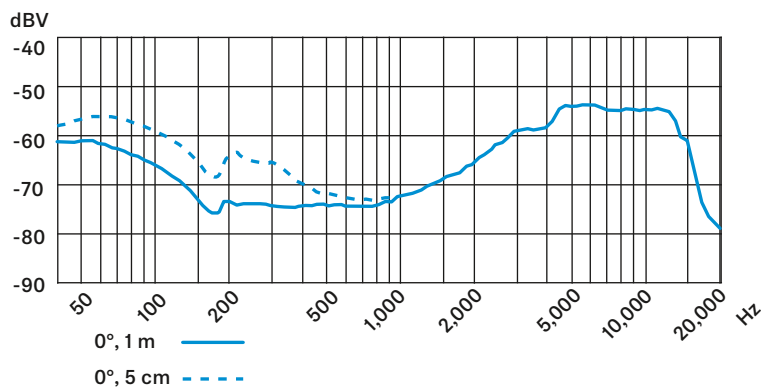
Specifications

Transducer principle	dynamic
Frequency response	20 - 16,000 Hz
Pick-up pattern	cardioid
Sensitivity (free field, no load)	0.9 mV/Pa (at 50 Hz) 0.25 mV/Pa (at 1 kHz)
Nominal impedance (at 1 kHz)	350 Ω
Min. terminating impedance	1 kΩ
Connector	XLR-3
Dimensions	∅ 60 mm, length 153 mm
Weight	318 g

Polar pattern

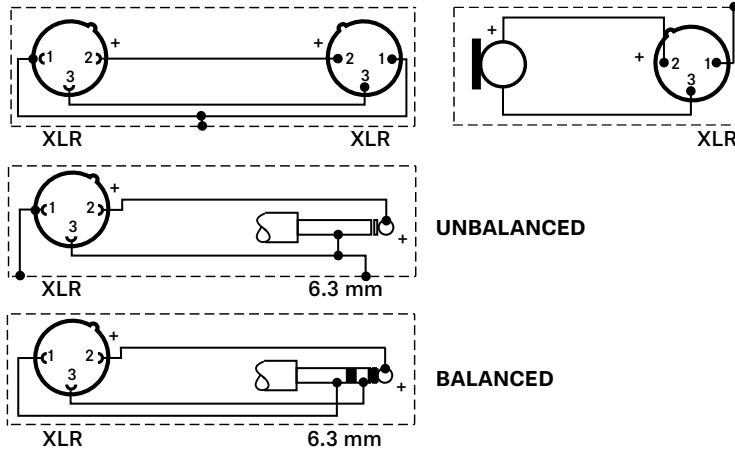


Frequency response





Connector assignment



Overview of applications

- Primary application
- Secondary application



Model	Vocal	Instrument	Microphone	Speaker	Headset	Stage	PA	Public Address	Other	Headset	Microphone
e 602 II		●	●	●	●	●				●	
e 604		●					●	●	●	●	●
e 608			●					●	●		●
e 609 silver						●		●	●	●	●
e 614		●	●			●				●	●
e 835	●	●									●
e 845	●	●									●
e 865	●	●									●
e 901						●	●				●
e 902						●	●	●			●
e 904		●					●	●	●	●	●
e 906						●		●	●	●	●
e 908			●					●	●	●	●
e 914		●	●			●				●	●
e 935	●										●
e 945	●										●
e 965	●	●				●				●	●